

Europe – Sweden - Göteborg



Google Earth

- Fifth largest country in Europe
- Approximately 9 million inhabitants
- Sparsely populated (20 people/sq.km)
- 85% in the southern half
- 12.1% immigrants (20% of foreign origin)
- 21 counties and 290 municipalities

Population:

- Göteborg 0.5 million
- Stockholm 0.75 million





Constitutional monarchy



- King Carl XVI Gustaf
- King since 1973
- No political power – only representative or ceremonial



Parliamentary government



Photo: Holger Staffansson

- General elections every four years to national, regional and local level
- 349 elected representatives
- 45% women in 2002
- Seats are distributed proportionately between the parties

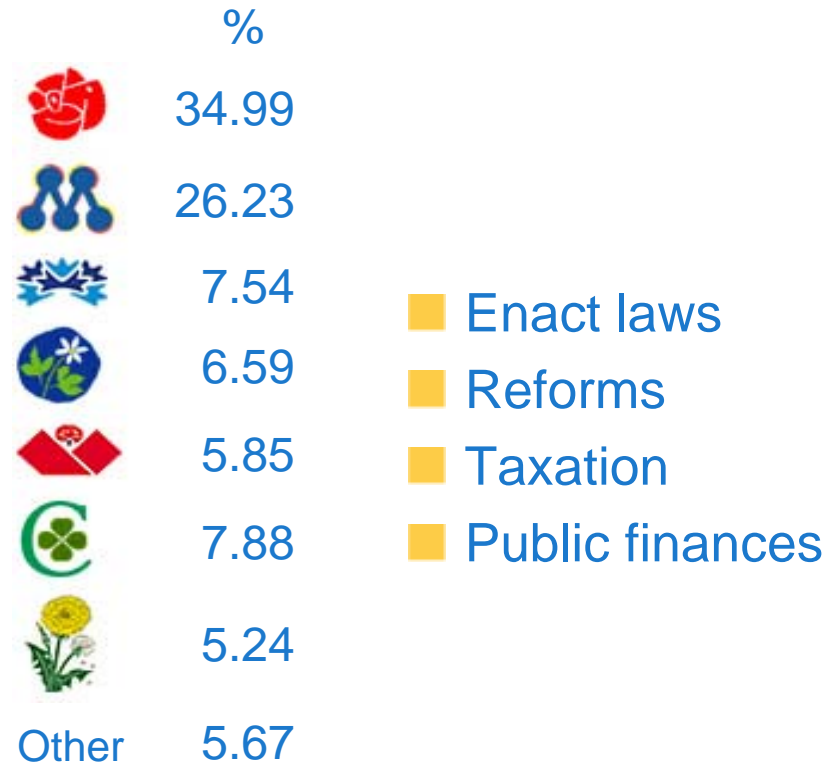


Fredrik Reinfeldt (M),
Prime Minister since Sept. 2006

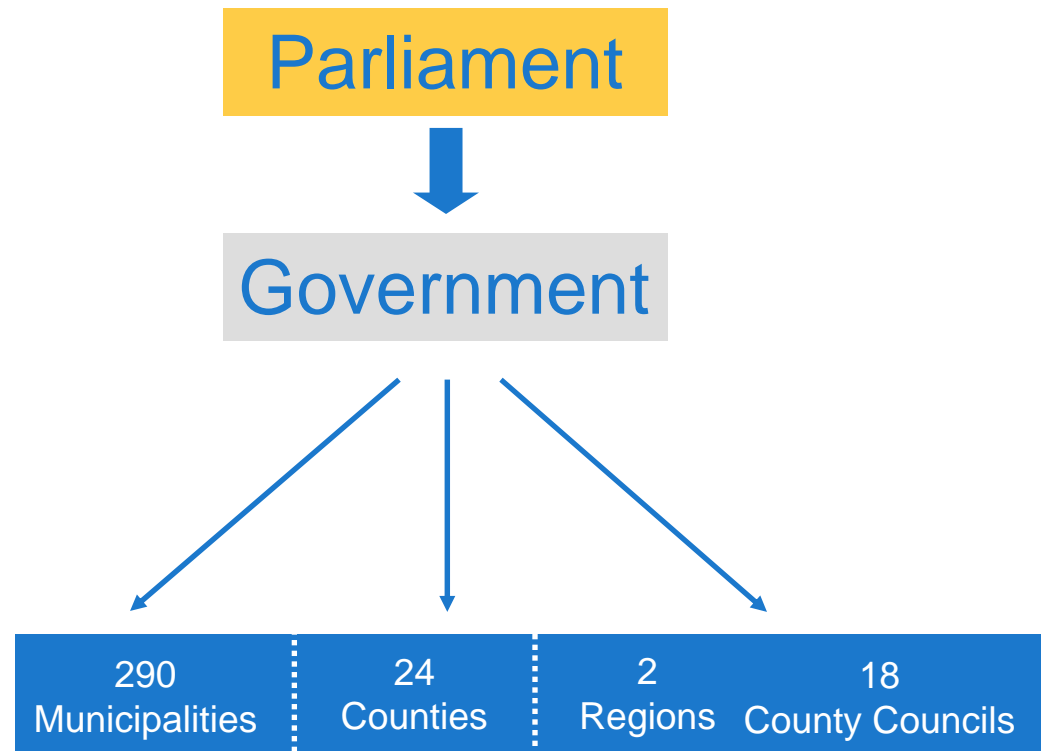
Photo: Pavel Flato



The role of "Riksdagen" [Parliament]



How Sweden is governed - 1



How Sweden is governed - 2

”Riksdagen” [Parliament]



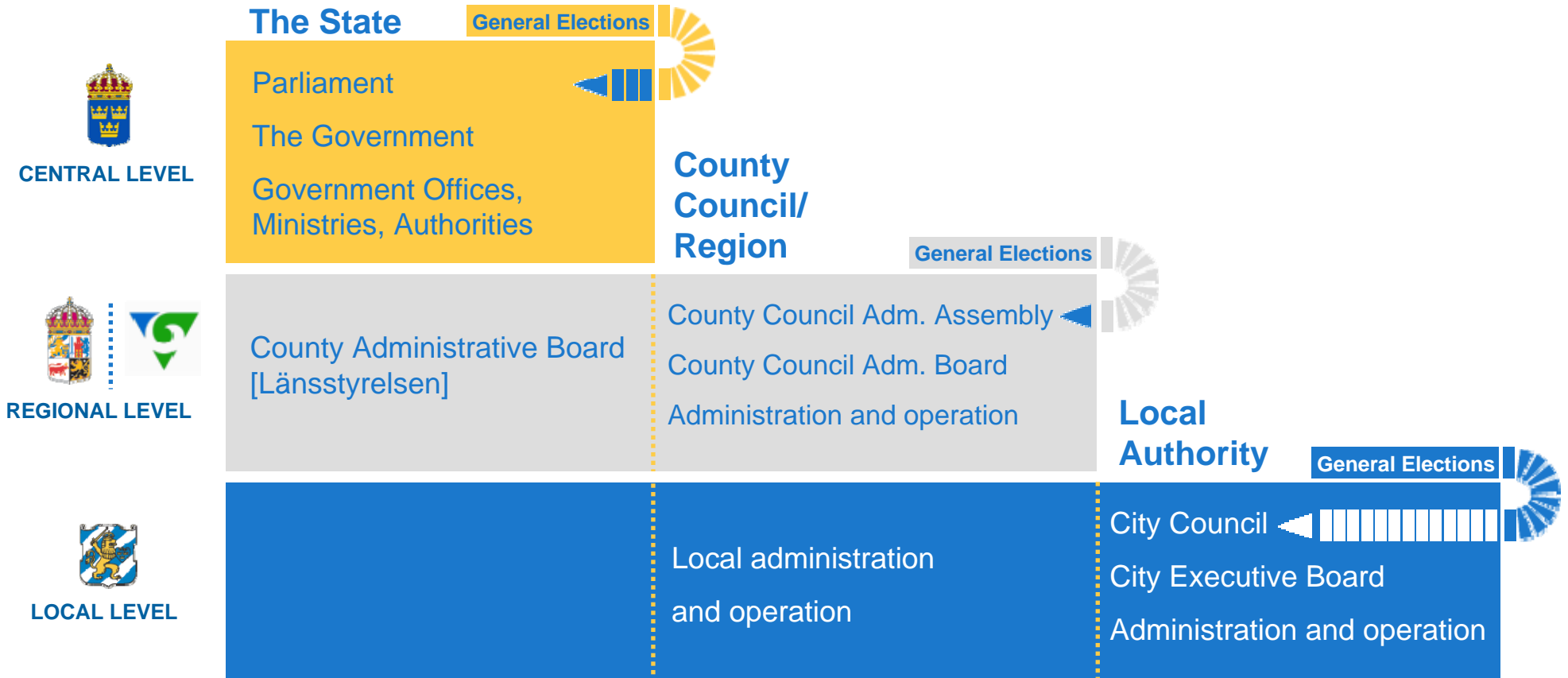
349 seats
7 parties
15 committees

The Government



13 Ministries
21 Ministers

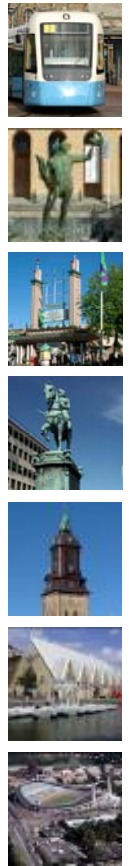
How Sweden is governed - 3



City of Göteborg



Photo: Flygare Palmhäs





Göteborg



Photo: City Museum



Photo: Anna Jolfors



Photo: Ulrika Cedervall



Photo: Johannes Haglund



Photo: Mats Andersson



Photo: Gösta Rydvall

- Founded in 1619
- Second largest city in Sweden – 480 000 inhabitants
- Administrative capital of the County of Västra Götaland





Business traditions



Photo: Klas Eriksson



Photo: City Museum



Photo: City Museum



Photo: Klas Eriksson



Photo: Klas Eriksson

- Long tradition of international trade and industry
- Swedish East India Company
- World leading in shipping industry





Business today



Photo: SKF photo archive



Photo: Volvo photo archive



Photo: Anna Jörfors



Photo: Klas Eriksson



Photo: Boo Hever



Photo: Port of Göteborg

- SKF, Volvo, Ericsson, Astra Zeneca
- From dockyards to science park
- Triple-Helix model
(Business, Research, Municipality)
- Port of Göteborg – Scandinavia's largest port and logistical centre





Higher education in Göteborg



Photo: Klas Eriksson



Photo: Klas Eriksson

Number of students

- Göteborg University: 50 000
 - The Sahlgrenska Academy: 3 000

- Chalmers Univ. of Technology: 10 500





Events and entertainment

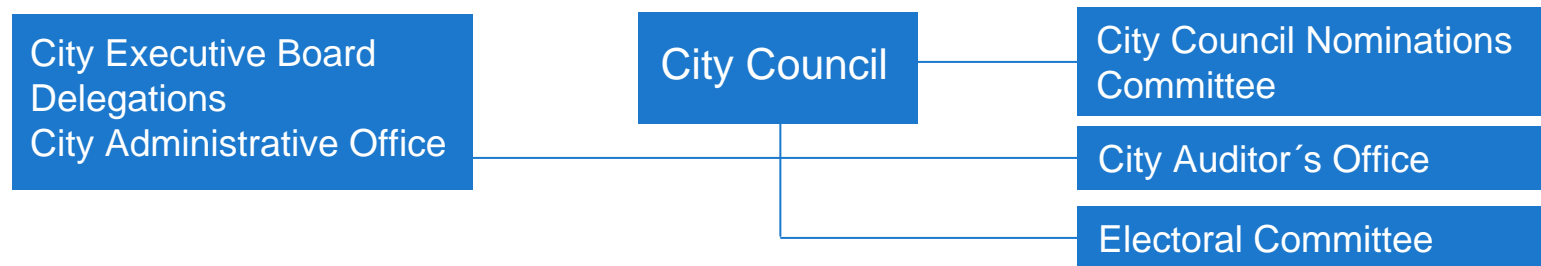


Göteborg - a city famous for arranging numerous major events:

- European Athletics Championship 2006
- European Council 2001
- Volvo Ocean Race 2006
- "Göteborgskalaset" [city festival]
- Congresses and exhibitions



Decentralised structure



Committees

- District Committee
- Education
- Art and Culture
- Recreation
- Land and Housing
- Public Works
- Traffic
- Environment
- Other Committees

Companies

- Arts and Culture
- Recreation
- Real Estate and Housing
- Public Works
- Traffic
- Industry and Commerce Other Companies

In total: 80 Committees and Companies





Jörgen Linder
Lord Mayor

The City Council (81 members)



- Makes all major decisions.
- Establishes goals and guidelines for local government operations.
- Approves the budget.
- Sets the local income tax rate.
- Decides on other important financial matters.
- Decides what committees there should be, as well as their structure and operating methods.





Göran
Johansson
Mayor

The City Executive Board (13 members)



- Supervises the administration of local government affairs.
- Closely monitors any issues that may affect the growth and financial position of the local government.
- Drafts the budget.
- Handles administrative tasks such as property management.
- Oversees municipal operations that are carried out in company form.



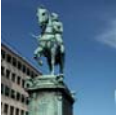


District Committees

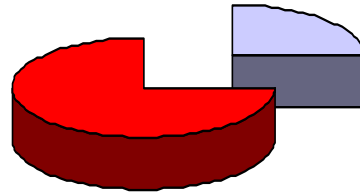
There are 21 district committees in Göteborg.

The district committees were introduced in 1990 in order to decentralise the political decisions in the city.





City districts



21 district committees
75 % of employees and city budget



Four areas of activity

- Child care
- Schools (Primary education)
- Social service
- Elderly care





Companies



The City of Göteborg has direct or indirect interests in a vast number of companies.

The enterprises are partially or fully owned by the municipality.

Examples of companies:



- the Port of Göteborg
- Göteborgs Spårvägar AB
(*Public transport by tram*)
- Liseberg AB
(*Amusement park etc.*)
- GREFAB
(*Leisure craft marinas*)



Twin Cities and Partner Cities



BERGEN KOMMUNE





City of Göteborg

